

WEAR FABRIC FACE COVERINGS WHEN OUTSIDE OF YOUR HOME

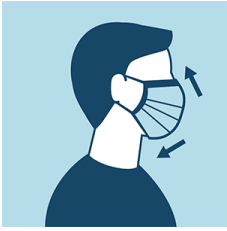
DONATE and LOCATE Fabric Face Coverings in Van Buren County

Van Buren United Civic Organization 73292 34 th Ave., Covert (269) 764-6088	Donate and Pick-up 9am – 11am Tuesdays and Thursdays	<ul style="list-style-type: none"> Accepting all homemade mask varieties
Covert Township Hall 73943 Lake St., Covert (269) 764-8986 ext. 7	Donate and Pick-up 9am – 11am Mondays and Wednesdays	<ul style="list-style-type: none"> Accepting all homemade mask varieties
United Christian Services 600 E. Michigan Ave., Annex Suite 1, Paw Paw (269) 415-0767	Donate and Pick-up Monday 9am – 2pm Thursday 9am – 2pm Saturday 12:30pm – 1pm *call if you need a special time	<ul style="list-style-type: none"> Accepting all homemade mask varieties
First Congregational Church, UCC 651 Phoenix Street, South Haven	Donate and Pick-up 10am – 12pm Monday, Wednesday, Friday	<ul style="list-style-type: none"> Accepting all homemade mask varieties
Simpson United Methodist Church 507 Joy St., Bangor	Donate and Pick-up Masks can be dropped off and picked-up on the sign in front of the building	<ul style="list-style-type: none"> Accepting all homemade mask varieties
Michigan/Indiana Sew You Care (local chapter) www.Facebook.com, Search: Michigan /Indiana Sew You Care https://www.facebook.com/groups/1406210259559629	Donate and Request	<ul style="list-style-type: none"> Seeking Volunteer Sewists & Homemade Mask Donations (will accept all patterns) Taking business and individual requests for masks Offer Delivery and pick-up (subject to location & availability)
Organizations & businesses seeking larger quantities of masks can request here: https://bit.ly/VBMaskRequest		

In accordance with **EXECUTIVE ORDER No. 2020-59**.

- Any individual able to medically tolerate a face covering must wear a covering over his or her nose and mouth—such as a homemade mask, scarf, bandana, or handkerchief—when in any enclosed public space.
- All businesses and operations whose workers perform in-person work must, at a minimum, provide non-medical grade face coverings to their workers.
- Supplies of N95 masks and surgical masks should generally be reserved, for now, for health care professionals, first responders (e.g., police officers, fire fighters, paramedics), and other critical workers who interact with the public.





Wear non-medical grade face masks when in any enclosed public space (e.g. grocery stores and pharmacies). Businesses are allowed to refuse service if you are not wearing one.

Cloth face coverings should:

- Fit snugly but comfortably against the side of the face
- Be secured with ties or ear loops
- Include multiple layers of fabric
- Allow for breathing without restriction
- Be able to be laundered and machine dried without damage or change to shape



Fabric face coverings are an additional measure to prevent the spread of COVID-19. Fabric face coverings are not a substitute for physical distancing. Continue to maintain 6-feet when outside your home.